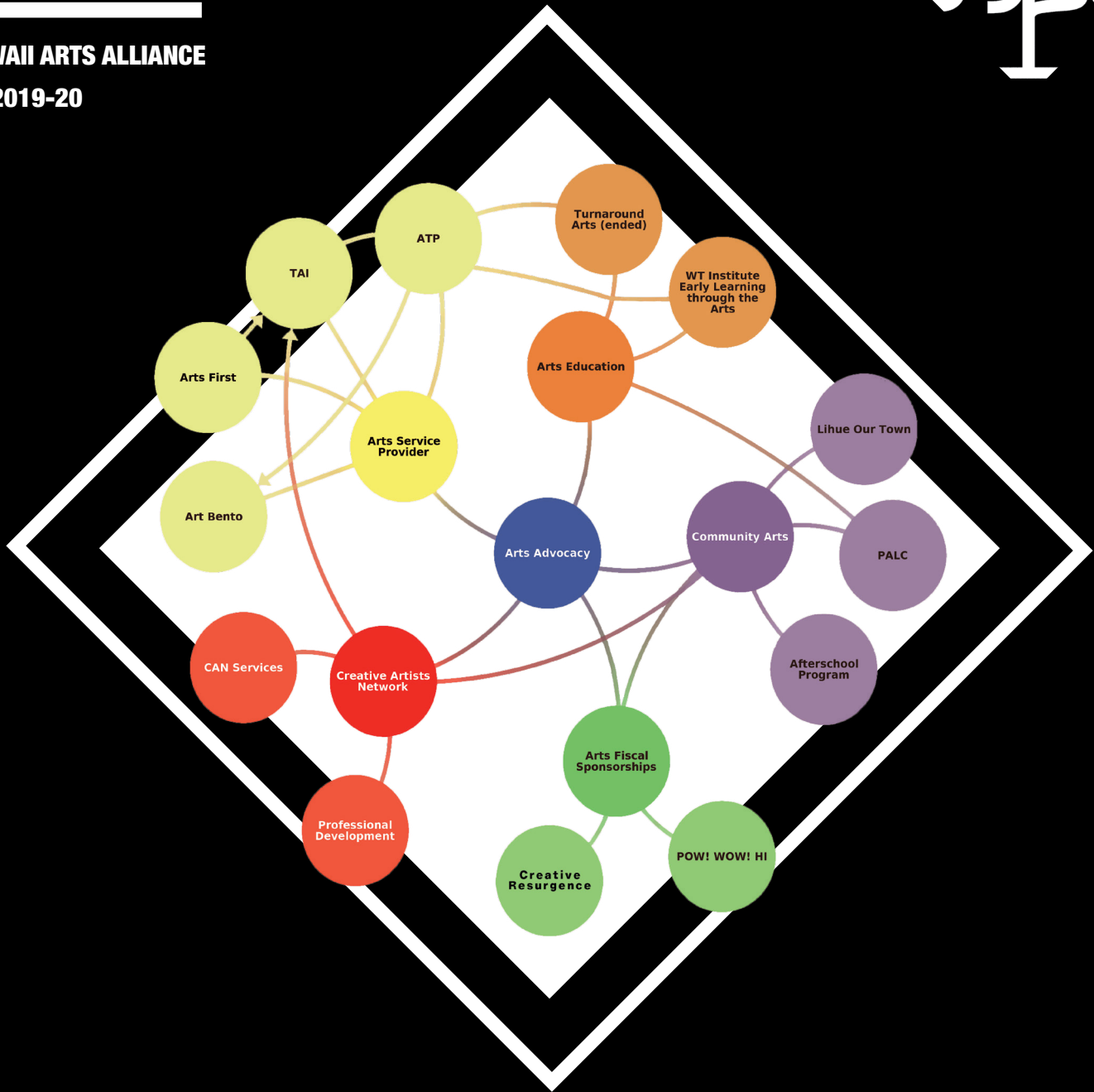
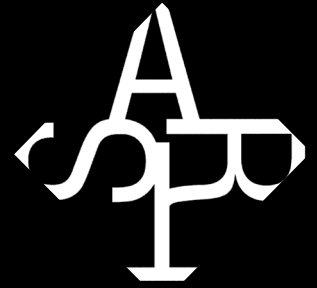


# ANNUAL REPORT

HAWAII ARTS ALLIANCE  
FY 2019-20



**FOUNDED IN 1980, THE HAWAII ARTS ALLIANCE'S MISSION IS TO ENGAGE AND TRANSFORM COMMUNITIES BY SUPPORTING AND CULTIVATING CREATIVITY THROUGH THE ARTS. AS THE STATE CAPTAIN FOR AMERICANS FOR THE ARTS AND A MEMBER OF THE STATE ARTS ADVOCACY NETWORK, WE ADVOCATE FOR ALL THE ARTS DISCIPLINES AND GENRES. TO DATE, THE ARTS ALLIANCE HAS FIVE AREAS OF PROGRAMMING — ARTS EDUCATION, ARTS SERVICE PROVIDER, COMMUNITY PROGRAMS, CREATIVE ARTISTS NETWORK, AND FISCAL SPONSORSHIPS.**

**“Practice any art, music, singing, dancing, acting, drawing, painting, sculpting, poetry, fiction, essays, reportage, no matter how well or badly, not to get money and fame, but to experience becoming, to find out what’s inside you, to make your soul grow.”  
(Kurt Vonnegut to Xavier HS students, New York City).**

**While it would be an understatement to say that 2020 has been a whirlwind year, the pandemic has also been a catalyst for change. The Hawai‘i Arts Alliance, like other arts organizations, has been pushed to innovate, pivot, and collaborate. Change can be unsettling but embracing it can lead to new collaborations and opportunities that were unimaginable. Most of all, change brings a new found sense of resurgence, purpose and connectivity. This Annual Report breaks with tradition to include the Fiscal Year 2019-20 and the Calendar Year of 2020 so that we may share with you what initiatives we have put in place to grow through the pandemic.**

**The Hawai‘i Arts Alliance has five areas of programming — arts education, arts service provider, community programs, creative artists network, and fiscal sponsorships. In an effort to diagram the diversity of our programs, we developed a relational map that is the cover graphic for the annual report. In the following pages, you will find information on our programs such as the success of Turnround Arts and our new affiliation with the Wolf Trap Institute for Early Learning Through the Arts. We have a special community initiative funded by the National Endowment for Arts Our Town in Lihue, Kauai.**

**In the Fall of 2019, the Hawai‘i Arts Alliance initiated the Creative Artists Network (CANHi) to build a platform for artists to connect across the islands, to promote collaboration, to offer business workshops, and, to build access to resources and benefits through group rates. We collaborated with Hawaii Contemporary (formerly Honolulu Biennial) to offer workshops for artists designed and led by Hawaii Contemporary Associate Director, Sara Raza. We are planning business nuts & bolts workshops for the Spring 2021 in collaboration with the Hawaii Contemporary, the East West Center Arts Program, and local speakers.**

**As a member of the Creative Resurgence hui, a diverse group of artists, educators, and administrators at arts and cultural organizations in Hawai‘i, we contributed to the development of a proposal to establish the Creative Resurgence Caucus at the State Legislature. With the support of Senator Taniguchi (Chair of the Labor, Arts & Culture Committee), who convened an informational hearing on December 3, 2020, we are working to raise awareness of the importance of the creative sector to the economy in Hawai‘i. We all greatly appreciate the First Responders in our communities who are working tirelessly to save lives. We also need to recognize the Second Responders, the Creatives, who are essential workers helping us to stay positive, recover, reflect, and rebuild. Creatives are the backbone of the tourist industry and the programming in cultural organizations. The creative economy brings in more than \$205.6 million dollars to Hawaii annually.\* We encourage you to support our effort to establish the Creative Resurgence Caucus by signing the proposal through the link on our website.**

**In this annual report, we highlight initiatives in our programs areas in addition to providing information on our Board of Directors, our financial wellbeing, and how you may support the Arts through the pandemic and in the recovery months ahead. Enjoy reading and sharing with your friends, family and community. Wishing you health and wellbeing for 2021.**

**Teri Skillman  
Executive Director**



**\*Arts & Economic Impact Study, 2017**

# **PREIS AWARD**

## **2019 HONOREE**

### **AARON MAHI**



**T**he Preis Award for 2019 was given to Aaron Mahi who is a conductor, performer, composer, arranger, educator, pastor, and chef. Born in 1954, Aaron was educated at Kamehameha Schools Kapālama, graduating in 1971. He received a Bachelors in Mus. Ed. from the Hartt School of Music at the University of Hartford in Connecticut.

As a musician, Aaron worked as a bass player and played Hawaiian music with George Kuo, Martin Pahinui and Eddie Kamae. He is also a slack key guitar performer. He has held several conducting positions such as conductor of the Hawaii Ecumenical Chorale since 1980 and the Kamehameha Alumni Glee Club. He was bandmaster and conductor of the Royal Hawaiian band from 1981 – 2005. During his tenure, the Royal Hawaiian Band toured Europe and entertained 17,00 people in 19 concerts in the course of 21 days. Aaron conducted the Royal Hawaiian Band in its first concert at Carnegie Hall (1988) and at the Peace Park in Hiroshima, Honolulu's sister-city (1989). In 1999 the Royal Hawaiian Band was inducted into the Hawaiian Music Hall of Fame. In 2003, Mahi was honored in 2003 with the German Medal of Merit from the Republic of Germany, the BundesverdienstKreuz, for his work in fostering German culture outside of Germany. He received the Golden Ring of Honor from the Association of German Musicians and the Order of Merit of Germany.

Aaron has also conducted the Honolulu Symphony (1988 – 1995), and debuted them at the Hollywood Bowl with slack-key artists Dennis Kamakahi, George Kuo, and David Kamakahi. He is associated with Waihona Mele No'eau, the selection committee for the Hawaiian Music Hall of Fame, the Honolulu Symphony Society and the Friends of the Royal Hawaiian Band.

Aaron has been a community leader in his role as pastor at the Community of Christ Church in Makiki. He's a cultural specialist who works with nonprofit organizations such as the Mālama 'Āina Foundation and the Partners in Development Foundation to teach people about Hawaiian traditions. From 2002 – 2013 Aaron was on the O'ahu Burial Council working to resolve conflicts between developers and families over ancestral remains. Aaron also served on the State Land Use Commission.

Aaron's newest venture as conductor is with Sovereign Strings, an ensemble that has revived nineteenth-century popular Hawaiian music. The ensemble is recontextualizing the sound of Leleiohoku, Likelike, Kalākaua, and Lili'uokalani through their arrangements and voicing.



## **ALFRED PREIS**

## **2020 AWARDEES**

## **DUANE PREBLE**

## **AND TOM KLOBE**

Hawai'i Arts Alliance is proud to announce the 2020 Honorees for the Preis Award are Duane Preble and Tom Klobe, both professor emeriti of the University of Hawai'i at Mānoa Art Department.

### **DUANE PREBLE**



**D**uane Preble is an American artist and art educator. He was born in 1936 in National City, California. He is the son of Bennett and Mary Salome (Williams) Preble and married Sarah Ann Hamilton on March 13, 1961. They have two children, Jeffrey Hamilton and Malia.

Duane completed his B.A. at the University of California at Los Angeles in 1959. He completed his Masters of Fine Arts Thesis entitled "A series of recorded images and sounds taken from everyday life and organized on the basis of creative indeterminacy to be super-imposed in rhythmical sequence" in 1963. He joined as a Lecturer at the University of Hawaii in Honolulu from 1963-1964, and then accepted a teaching position in the UH Mānoa Art Department from 1964-1991. Duane held a Visiting Professor position at the University of Colorado for 1979-80. He retired from the University Art Department in 1991 and in 1993 he accepted an advisory position to the Board of the Honolulu Waldorf School.

Duane also held positions in community organizations in Honolulu. As a Member and Chair of the City Commission on Culture & the Arts ( 1971-1973); as a Board Member for the Civic Forum for Public Education (1998-2000); as President of the Board for Keiki o ka 'Āina Family Learning Centers (2004-2006); as a Board member of Mālama o Mānoa (2003-2006); and as a Board member for the Friends of Libraries of Hawaii since 1997. In addition to these positions, Duane has been a Trustee for the Honolulu Academy Arts since 1973. He was Chair of the Arts Department at the University of Hawai'i (1985-1987) and on the Board of Directors for the Hawaii Alliance Arts Education from 1988-1995.

As an artist, Duane is listed as a notable artist and art educator by *Marquis Who's Who*. He has authored numerous books including 11 editions of *Preble's Artforms*. Other titles include; *Design with Nature*, *Man Creates Art Creates Man*, *We Create Art Creates Us*, and *Writing On-line Research Guide for Arts Forms*.

Duane's passions outside of teaching and creating art are hiking, bicycling, swimming, and music.

## **TOM KLOBE**



**T**om Klobe grew up on a small farm in an all-white community near Young America, Minnesota. His parents taught him to believe in the American ideals of freedom and democracy, in the rights and privileges of being an individual, and, most importantly, that “all men are created equal.” “They were quiet liberals in a conservative community, staunch Catholics, but from early age, apprehensive of the clergy.” His parents taught him to question authority and to “Always do the right thing, no matter how difficult it is.”

When he moved to Hawaii in 1959, a year after finishing high school, he felt he could freely live the American ideals his parents had instilled in him. Freed from the American norm, and realizing that democracy thrives on pluralism and diversity, he could truly be an individual. Foremost, he saw and understood the necessity of equality for all people, and knew that he had to work to ensure that all would have the same opportunities. Though his aptitudes and interests were in art, and he would strive to find ways to mesh his career with his philosophical thought. In the early 1960s, Tom joined the Peace Corps and was posted to Iran which was a life-changing experience.

Philosophically, the people of Alang, Golestān, Iran have been the most important influence on Tom. He learned the importance of the little things in life from them and that every moment must be cherished. It is the people that he works with in community projects, those in the classroom, and those who come to see an exhibition who must be considered first. “In a sense the Peace Corps experience became a model for my life.”

As a Peace Corps Volunteer, he learned the persuasive qualities of quiet leadership that grounded his 29-year career as Director of the University of Hawaii Art Gallery. Tom was the founding director of the University of Hawai’i Art Gallery and is an emeritus professor in the UH Mānoa Art Department. Each exhibition Tom designed was like a Peace Corps tour of duty for him; a project that allowed him to learn about the world, himself, and others. Each has allowed him to experience the exultation of discovery that he first experienced as a Peace Corps Volunteer.

Tom organized and designed over 200 exhibitions, five of which received the prestigious Print Casebooks: *Best in Exhibition Design Awards*. He authored or edited over 35 publications. Tom authored two books -- *Exhibitions: Concept, Planning and Design* was published by the American Association of Museums Press in 2012 and *A Young American in Iran* was published by Peace Corps Writers in 2014. *Exhibitions* provides extensive advice on the art of exhibition development, while exploring how significant ideas are communicated to museum visitors through exhibit design.

Tom was named a Living Treasure of Hawaii in 2005 and was the recipient of the University of Hawaii Robert W. Clopton Award for Distinguished Community Service in 2003. In 1999 he was honored by the Republic of France as a Chevalier de l’Ordre des Arts et des Lettres for contributions to the arts in France and Hawaii.

# COMMUNITY PROGRAMS



## **HAWAII ARTS ALLIANCE AND COUNTY OF KAUA'I NEA OUR TOWN GRANT SUPPORTS THE LIHUE RICE AND KRESS STREET CREATIVE COMMUNITY PROJECT**

By Terry Liu, Our Town Project Director

County of Kaua'i, business associations, community organizations, and artists collaborated to reinvigorate the town center in Lihue. The National Endowment for the Arts Our Town grant supports networks within and between the partners, and establishes communication and collaboration around shared goals. The project builds upon a US Department of Transportation Investment Generating Economic Recovery (TIGER) grant project to develop Rice Street in Lihue's Town Center as well as to transform the historic S. H. Kress Building to an arts center. So far, despite the pandemic causing cancellation or postponement of concerts and street events, the partners inaugurated the first annual NirMĀNAfest mural project. Fourteen artists painted 5 murals. Some of the artists initiated a mentoring program for young artists too. The Our Town grant also supported a nightly ZOOM concert series for musicians who were out of work due to the pandemic.

In 2021 the project will bring together JV D Two Lihue LLC, Rice Street Business Association, Garden Island Arts Council, and other community partners to establish staff positions to coordinate public arts events and gather partners to formalize ideas to develop an arts hub in Lihue Town Center.

Former Hawaii'i Arts Alliance Interim CEO, Terry Liu, who resides in Kaua'i, is the Project Director.



Youth who will advise development of arts mentoring on Kaua'i, helped paint a mural on NirMANfest opening day, October 18.



Local musician Kyle J La Benz and his wife Nikole, on August 3 performed for the nightly zoom concert series produced by Rice Street Business Association (RSBA).



Addison Bulosan, RSBA President, and Lexi Jones from KONG FM 93.5 hosted the series that supported performing artists who were out of work due to the pandemic. Each concert also promoted local businesses that were open for carry out.

## **PERFORMING ARTS LEARNING CENTERS**



The PALCs were initiated by the Hawai'i State Department of Education (DOE) and now are funded with help from local businesses and their successful response to the Hawai'i Arts Alliance's Grant Challenge program. PALCs operate as after-school programs, with students receiving credit for each successfully completed semester. While PALC students come mainly from the hosting school, PALCs are inclusive and community-wide, with auditions open to any public school student. PALC students perform on campuses and in the community, including local radio stations, shopping malls, and festivals.

The PALCs must raise matching funds for two installments of \$2,425. Almost all of the PALCs were able to fundraise and met the match challenge. With all of the performances cancelled for April and May, the PALCs lost the ticket sales revenue that helped them cover costs that the challenge award does not cover. The Hawai'i Arts Alliance fiscally supported 10 PALCs this year.

Students in the PALC programs meet the Hawai'i's Drama Standard and appropriate benchmarks in the afterschool program. Through a professional staff of educators, students learn theatrical lighting, sound, stage design and management; vocal technique, musical theory, sight-reading; and dance technique, theory, choreography, auditioning and performance. This experience is invaluable for the students who would otherwise not have the opportunity to be trained in the dramatic arts as it is not a requirement in DOE schools for high school graduation.

PALCs weave training in the dramatic arts with skills that address social-emotional learning and provide students with transferable life-skills. Training through the PALCs refines student skills in public speaking, collaborative teamwork, memorization and creative problem-solving.

Usually, the performing arts require face-to-face interaction in a theater environment or a classroom. The Performing Arts Learning Centers had to pivot to a virtual classroom for instruction and create virtual performances. The ability to do this ultimately requires access to technology, the skills to use technology, and the funds to obtain the technology. Technology needs are in addition to the usual costs for scripts, sheet music, pre-recorded soundtracks, costumes, sets, sound and lighting equipment. A good example of a program pivoting is T-shirt Theater which made its home at Farrington High School since 1985. When Covid hit, they lost Farrington's funding, which was ¼ of their annual budget.

The bottom line is that all of the PALCS are committed to supporting their students in any way possible. These programs are safe havens for students and in addition to training in the performing arts, they provide social-emotional support that is very much needed now.

### **PALCS**

Baldwin High School, Castle High School, Hilo High School, Kaimuki High School, PAC Kapolei, Kauai PALC, Mililani High School, Nānākuli High & Intermediate, T-Shirt Theatre Farrington, Lanai Academy of Performing Arts.



**ARTS EDUCATION**  
**SERVICE PROVIDERS**  
**& COLLABORATORS**



# **HAWAI'I ARTS ALLIANCE**

**FY 2019-20**

## **EDUCATION PROGRAMS**

### **TURNAROUND ARTS:**

#### **HAWAI'I**

#### **NUMBERS SERVED:**

2 schools

1,482 students

135 teachers

This was Year 5 for our Turnaround Arts schools Kalihi Kai Elementary and Kamaile Academy PCS. The arts are integral to each school's identity and its presence was felt strongly in the classroom with teachers integrating arts into their curriculum as well as the strong presence of community arts resources to enrich and deepen students' thinking and experience. Kalihi Kai's 2019 fall semester was robust with professional development for all teachers in drama strategies with Sean Layne. Kindergarten teachers and students worked with Wolf Trap Master Artist Val Carroll. Grades 2-4 participated in residencies with Hawai'i State Foundation on Culture and the Arts' Art Bento @ HiSAM or Artists in the Schools, while 5th grade participated in Soundshop residencies with Honolulu Museum of Arts. Paper Moon Puppet Theatre, guest artists at Shangri-La, shared a special session with a group of 3rd grade students. The school was also the recipient of an ocean mural by Artist Hilton Alves to beautify one of their campus buildings.

At Kamaile Academy PCS, Hawaiian culture and values are grounding and strengthening their school community. At the end of SY2019, the leadership team held a one week retreat to think forward how to weave the arts integration strategies with cultural values, In school year 2020, the school continued to bring in arts residencies with the Art Bento Program, Artists in the Schools, and Soundshop at the Honolulu Museum of Art.

Visual artist Meleanna Meyer, worked with both staff and students, to share techniques and activities from her book, "Arting and Writing to Transform Education: An Integrated Approach for Culturally and Ecologically Responsive Pedagogy (Frameworks for Writing)." Secondary students had the opportunity to work with a Balinese Performing Group through the Theatre Department at University of Hawai'i at Manoa.

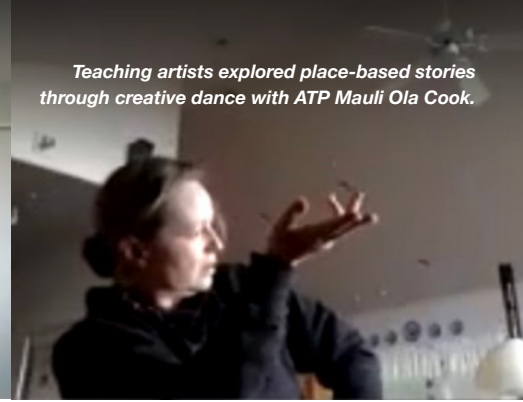
In April, both schools and TAA program directors agreed that the schools had evolved out of Turnaround Arts status. The arts are an integral part of their identity and the school leadership teams felt they have a strong foundation to move forward. The TAA program directors assured both schools that the Hawai'i Arts Alliance will continue to support with resources and as a thought partner.

Our schools' growth and transformation was supported by so many generous partners. We gratefully acknowledge the foundations, community partners and individuals who believed in our schools' journey these past five years - Turnaround Arts National, The Learning Coalition, Campbell Foundation, City & County of Honolulu, Weissman Family Foundation, Samuel N. & Mary Castle Foundation, The Keith & Judy Swayne Family Foundation, The Joseph & Vera Zilber Charitable Foundation, Johnson Ohana Foundation, Creview Foundation, Cooke Foundation, First Hawaiian Bank Foundation, Central Pacific Bank, Hawai'i Lodging and Tourism Association, Hawai'i State Foundation on Culture and the Arts, and the Turnaround Arts Partners (individuals). Mahalo nui loa.



## **WOLF TRAP AFFILIATE FOR ARTS INTEGRATION IN EARLY LEARNING**

The Hawaii Arts Alliance is in the final stages of becoming the newest affiliate partner of Wolf Trap Institute for Early Learning Through the Arts (Wolf Trap Institute), a program of the Vienna, Virginia-based Wolf Trap Foundation for the Performing Arts, and a leader in the field of arts-integration in the early childhood space. Wolf Trap Institute leverages the power of the performing arts to provide early childhood educators with high-quality professional development to create joyful, active learning experiences for young children. Through professional teaching artists, Wolf Trap Institute delivers customized, in-class professional development to early childhood educators using proven, arts-based strategies that apply across curricula and support development in key areas like language, literacy, math, science, and social-emotional skills. This partnership will allow the Hawai'i Arts Alliance to work with Wolf Trap Institute to train teaching artists in Hawai'i in Wolf Trap Institute's model and bring arts-integrated learning to young children and professional development to educators in the islands. Training for the first cohort of Hawai'i Teaching Artists begins in 2021!



Teaching artists explored place-based stories through creative dance with ATP Maui Ola Cook.

### **ARTS FIRST** **PROFESSIONAL DEVELOPMENT** **FOR TEACHING ARTISTS**

#### **NUMBERS SERVED:**

**85 Teaching Artists**  
**(Oahu, Maui, Hawai'i Island, and Kauai)**

**5 Administrators**

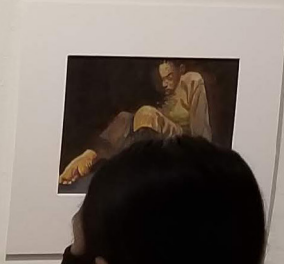
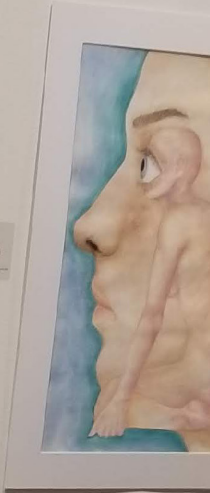
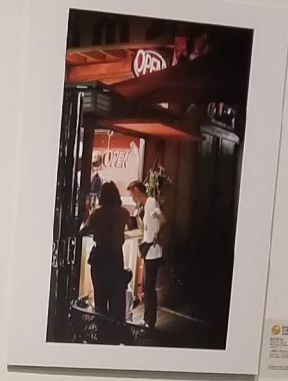
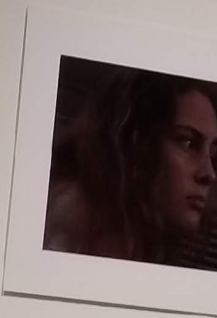
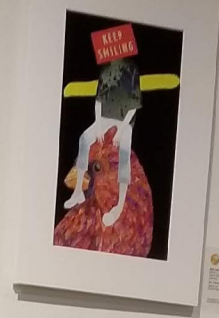
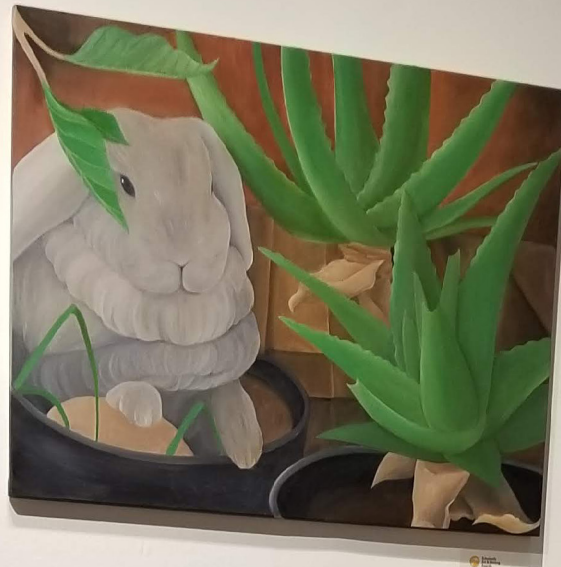
**13 presenters**

The 2020 ARTS FIRST Teaching Artists Institute was the primary professional development for teaching artists on the statewide SFCA Artistic Teaching Partners (ATP) Roster and provided strategies and tools for adapting arts curriculum to the 2020-2021 school year amidst the challenges of COVID-19. Fourteen separate sessions were presented online through Zoom from June 1 through June 26. The first and last sessions, the Launch Party and Pau Hana with Keynote, were for ATP teaching artists only, offering this close knit group from around the state to reconnect. The remaining 12 sessions focused on the strands of education, technology, artistry, and wellness in this time of COVID. With three separate sessions in each strand, ATP chose a minimum of one session per strand to fulfill their yearly requirement. In addition, the 12 sessions were made available to invited non-ATP teaching artists in Hawai'i. The Alliance served as coordinator of the event.

### **ARTS FIRST** **PARTNERS**

ARTS FIRST was established to ensure meaningful arts education learning experiences for all Hawaii children. ARTS FIRST: ACT 306/01 named six ARTS FIRST partners to oversee arts education: Hawai'i Department of Education, Hawai'i State Foundation on Culture and the Arts, UH College of Education, UH College of Arts and Humanities, Hawai'i Association of Independent Schools, and Hawai'i Arts Alliance.

AFP advocates for the ARTS to be on par with other disciplines and are integrated into the statewide educational system, P-12. The proven benefits of adding the Arts to the curriculum is beginning to gain ground in Hawaii. To help with attaining this goal, we are working on the adoption of the National Core Arts Standards by the Board of Education.



**“IT WAS REWARDING TO SEE HOW STUDENTS WERE SO INTERESTED, ENGAGED, AND ON TASK WITH THEIR ART PIECE.”**

**HAWAI`I ARTS ALLIANCE**  
**FY 2019-20 ARTS EDUCATION**  
**SERVICE PROGRAMS**

**ART BENTO**  
**PROGRAM @ HISAM**

**NUMBERS SERVED:**

130 classes

16 schools

IHS Summer Program

2,718 students

153 teachers

144 chaperones

This is the tenth year that the Arts Alliance provided program support for the implementation of Hawai'i State Foundation on Culture and the Arts' (HSFCA) highly successful Art Bento Program @ the Hawai'i State Art Museum, a standards-based museum education program. Students in grades 2 – 6 explored the theme "Responding to Art," along with their teachers.

Artworks from the HSFCA's Art in Public Places Collection, on view at the Hawai'i State Art Museum, served as a catalyst for students to think and communicate. Activities foster 21st Century learning skills: careful observation, critical thinking, incisive listening, and thoughtful speech.



**“I LOVED SEEING THE JOY THE  
CHILDREN HAD WHEN DISCUSSING  
THE ART AND THEIR EXCITEMENT  
WHEN THEY WERE CREATING  
THEIR OWN (ART)WORK.”**

# **CREATIVE** **ARTISTS'** **NETWORK**

Just prior to the COVID shutdown, the Hawai'i Arts Alliance initiated the Creative Artists Network to build a referral platform for artists, to connect artists across the islands, to promote collaboration, to offer business workshops, and to build access to resources and benefits through group rates.

As part of our advocacy for the arts and artists' communities state-wide, Hawai'i Arts Alliance is building a statewide artists' network to better advocate for and support artists who are permanent residents of the Hawaiian Islands, living in-state year-round.

## **THE GOALS ARE:**

**1. TO ESTABLISH AN ARTISTS' NETWORK**

**2. TO SERVE AS A REFERRAL PLATFORM FOR ARTISTS**

**3. TO CONNECT ARTISTS TO WORKSHOPS ON BUSINESS MANAGEMENT AND SKILLS**

**4. TO PROVIDE ACCESS TO RESOURCES AND SERVICES SUCH AS GROUP INSURANCE**

**LEGAL ADVICE, COMMUNITY COLLABORATIONS, EVENTS CALENDAR, AND MORE!**

Hawai'i Arts Alliance is redesigning our website to further our goals. Our hope is that the platform will improve our ability to communicate with artists so that we can better advocate on your behalf.

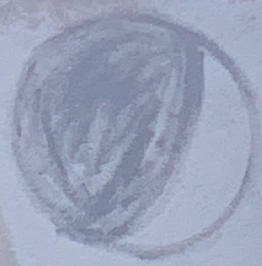
This Fall, we collaborated with Hawaii Contemporary (formerly Honolulu Biennial) to offer workshops for artists designed and led by Hawaii Contemporary Associate Director, Sara Raza. We will be offering a second series of workshops in the Spring of 2021 by collaborating with Hawaii Contemporary, East West Center Arts Program, and individual artists.

To date, we have 132 artists who have joined our network. Membership in the network is free. Services that we build into the network will be offered at the lowest possible rates for artists. Interested? Please complete the Google form using this link.

**<https://forms.gle/vCHeoAAHRWM4EKQB7>**

Feel free to forward this information to any Hawai'i artists you know.  
The bigger the network, the more effective we can be.

KūPAU



ōle kū Kah

MUKU

ōle Pa

Mauli

Huna

Lono

Mōhal

Kāne

Hua



Kāhā PAU

lol

KūPAU

ahēata

26242

A&E EQUIPMENT RENTALS 847-4267

Lāaukū Kah





# DONORS

## WE THANK

### EVERYONE WHO CONTRIBUTED

#### DURING THE FISCAL YEAR

#### 2019-2020

#### **ARTS Angels**

We are grateful to all our angels who make a difference with annual investments of \$3,000 or more to support our mission.

#### **cARTe Blanche (up to \$100,000 and above)**

The Weissman Family Foundation

#### **smART Investor (up to \$50,000)**

City and County of Honolulu  
Barbara Barnard Smith  
Swayne Family Fund  
Zilber Family Foundation

#### **sweetheART Deal (up to \$20,000)**

Atherton Foundation  
Cooke Foundation  
Lynn Johnson  
Johnson Ohana  
Charitable Foundation  
Sharon McPhee  
State of Hawaii

#### **pARTner (up to \$10,000)**

ArtsWave  
Sandra Bangert  
Jan Dill  
Peter Drewliner  
Festival Management Corp  
Halekulani Corporation  
Gail Mukaihata Hannemann  
Aaron Mahi  
Natalie Mahoney  
Maile Meyer  
Peter Sheehan  
Keith & Judy Swayne  
The JFK Center for  
Performing Arts  
University of Hawaii Foundation

#### **impARTer (up to \$2,500)**

Akiyama Family Foundation  
County of Kauai  
Hawaiian Mission  
Children's Society  
Donald Johnson  
Martinez Family Charitable Fund  
Jean Rolles  
Aaron Sala  
Tulsi Now, Inc.  
YourCause, LLC

#### **fast stARTer**

#### **(up to \$1,000)**

Carol Aki  
Arline Akina  
Aloha United Way  
Colleen Blacktin  
Phil Bossert  
Michael & Debra Bressemer  
Allyn Bromley  
Margaret Burgessporter  
Marilyn C Cristofori  
E Noa Tours & Waikiki Trolley  
Facebook  
Sarah Elizabeth Fincke  
Foodland Give Aloha  
Mary Jo Freshley  
Royal Fruehling  
Suzan Harada  
Impact Hub Honolulu, LLC  
Mike & Sandy Irish  
Kim Coco Iwamoto  
Bonnie Judd  
Traci Kawahara  
Richard Kennedy  
Pearl M. Lanai  
Evelyn Lance  
Don & Pamela Lichty  
Liliuokalani Trust  
Terence Liu  
Jon Magnussen  
Meleanna C Meyer  
Martha Nakajima  
Paypal Giving Fund  
Marrie Schaeffer  
Yukie Shiroma  
Jamie Simpson  
Laura Smith  
Michael Tenjoma  
Michael Titterton  
Laurie Tom  
Laura Vines  
Margo Vitarelli  
Margaret Walker  
Mark Yamane  
Valerie Yee  
Peter Young

#### **ARTist (up to \$100)**

Noah Acio  
Anaceto Acosta  
Madaesia Ah Tou  
Jesse Allen  
Aloha Pacific FCU  
Amazon Smile  
Alan Anderson  
Briana Anderson  
David Anderson  
Kurt Antolin  
Juno Apalla  
Treavor Applebaum  
Jeffrey Aquino  
Rita Asato  
Ioane Atanoa  
Jhon Loyd Barit  
Brent Baro  
Zachary Baro  
Maverick Basangyan  
Shawn Bohol

Bernalie Bonsato  
Susan Browne  
Lanaly Cabalo  
Nelda Caddali  
George Carambas  
Linda Carnevale  
Maike Celestino  
Edward Cheong  
Kelsey Chinen Faumui  
County of Hawaii  
Mona Eisa  
Tupou Eliu  
Marcos Esleit III  
Ryan Eugenio  
Marshall Faa'aliga  
Alberto Fajardo  
Bryanna Fernando-Gaoiran  
Jason Ferraro  
Charles Ferrer  
Glen Freitas  
Shari Fukumoto  
Bryson Galon  
Vanessa Gandeza  
Margie Garo  
Harriet Glass  
Elias Gomez  
Sandy Higa  
Snowden Hodges  
Kody Holu  
Edward Holu Jr  
Rian Ishikawa  
Kealani Jarra  
Brian Javonillo  
Patti Kadohiro  
John Kalaluhi-Freitas  
Pearl Kalamau  
Leila Kaleialoha  
Dasha Kanakami  
Stephen Katayama  
Marcus Kawahara  
Kalena Kinimaka  
Tashawnda Knisley  
David Knowles Jr  
Rolly Lacar  
Theodore Lacuesta  
Renato Lagarto  
Michael Land  
Bryan Lastimosa  
Jonathan Lazaro  
Sterling Lee  
Jonah Libre  
Shasten Lincoln  
Keith Macapagal  
Joshua Mahelona  
Brandon Marcos  
Carlos Martin  
Ryan Masa  
Carly Matsumoto  
Elizabeth McKoy  
Serkins Mokut  
Marcia Morse  
Dave Moss  
Neal Nagamine  
Nola Nahulu  
Deborah Nehmad  
Richard Nelson  
Jordan Okimoto  
Adrienne Ono

Tiarre Ortiz  
JR Oshiro-Koanui  
Brandy-Alina Paguirigan  
Harley Parayno  
John Pedro  
Kathy Pha  
Darrell Powers  
Melanie Pruitt  
Frederick Quinto  
Vincenth Quinto  
Brianna Ramos  
Lodenila Ramos  
Jonathan Ranada  
Chancellor-Shiyler Renteria  
John Paul Reyes  
Diego Dren Rivera  
Norman Ruaburo  
Colette Sanchez  
Loida Santos  
George Sapla  
Gerald Sarmiento  
Gokhan Savk  
Laki Schuster  
Schwab Charitable Fund  
Travis Scott  
Nathan Serdenia  
Paven Sinn  
Juliana Smith  
Stephanie Souza  
Jimmy Subia  
Siosua Taufa  
Jonel Tejero  
Edgardo Templo  
Raymond Thompson  
Daisy Mae Tiposo  
Roxanne Tom-Detol  
Rosalie Trinidad  
Tyler Voloria  
Marlyn Williams  
Warren Wong  
Stuart Yahiku  
Breanne Yang  
Sheigh Yap  
Maile Yawata  
Lynn Young



# **SUPPORT THE**

---

# **WORK OF THE**

---

# **HAWAI'I ARTS**

---

# **ALLIANCE**

---

## **OPTIONS FOR SUPPORT** **OF HAWAII ARTS ALLIANCE**

1. An old fashioned check sent to:

Hawaii Arts Alliance  
P.O. Box 3948  
Honolulu, HI 96812-3948

2. Monthly PayPal donation

3. Facebook donation

4. <http://smile.amazon.com/ch/99-0211535>

5. Planned donation through your Bank

6. Join Aloha United Way #72450

(See your employer)

Arts nonprofits, like the Hawai'i Arts Alliance, are businesses that serve the community and support Decent Work for our employees and for the Creative sector.

**“The decent work movement presents an opportunity for the sector to act as a champion of working conditions and social policies that not only ensure dignified and supportive work environments for employees, but also support the overall health and effectiveness of the NFP sector.”**

Most of the grants that we receive are restricted to program implementation with a small percentage of the award for operational support. In truth, nonprofits need operational funds to pay staff salaries and benefits, rent, utilities, organizational insurance, equipment rental, technology, and other non-program-specific expenses. None of the programs would be possible without unrestricted operating funds. Our staff is key to implementing the high-quality work that we deliver on every program. Keeping staff employed through the pandemic has been our top priority to weathering the recession, collaborating, and ensuring that the Hawai'i Arts Alliance is dynamic.

We realize that succor comes in many different ways so we are sharing various options. We need your support to continue. No donation is too small. Your kindness is deeply appreciated.

Please contact us if you have any questions or need assistance.

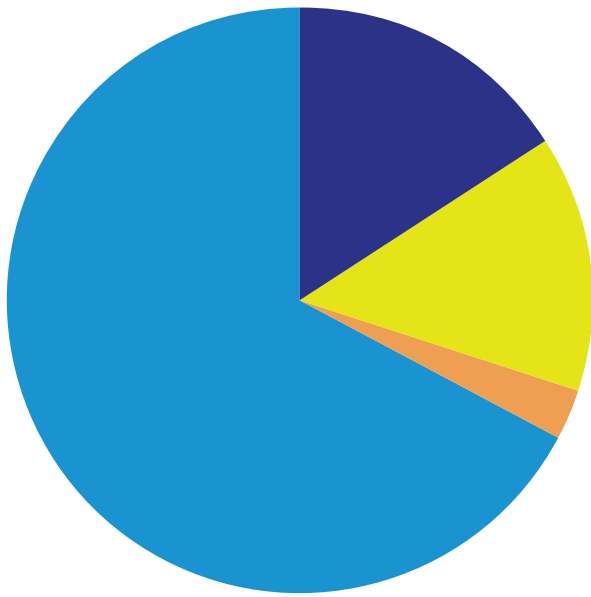
**Phone:** (808) 533-2787

**Email:** [arts@hawaiiartsalliance.org](mailto:arts@hawaiiartsalliance.org)

# FINANCIAL REPORT

OUR FISCAL YEAR IS JULY 1 TO JUNE 30. THESE CHARTS SUMMARIZE OUR FINANCIAL REVENUE SOURCES AND PROGRAM EXPENSES ON A CASH BASIS FROM JULY 2019 THROUGH DECEMBER 2020. THE ANNUAL INDEPENDENT AUDITOR'S REPORT, ON THE ACCRUAL BASIS, IS AVAILABLE UPON REQUEST. DUE TO THE PANDEMIC, WE DECIDED TO PROVIDE THE MOST UP TO DATE FINANCIAL INFORMATION TO DEMONSTRATE THE IMPACT COVID HAS HAD ON THE NONPROFIT.

## SOURCES OF FUNDS



**67%** Government: Federal, State & City | \$338,574.4

**16%** Individual Contributions | \$77,942.95

**14%** Foundations | \$71,542.42

**3%** Corporations | \$14,164.45

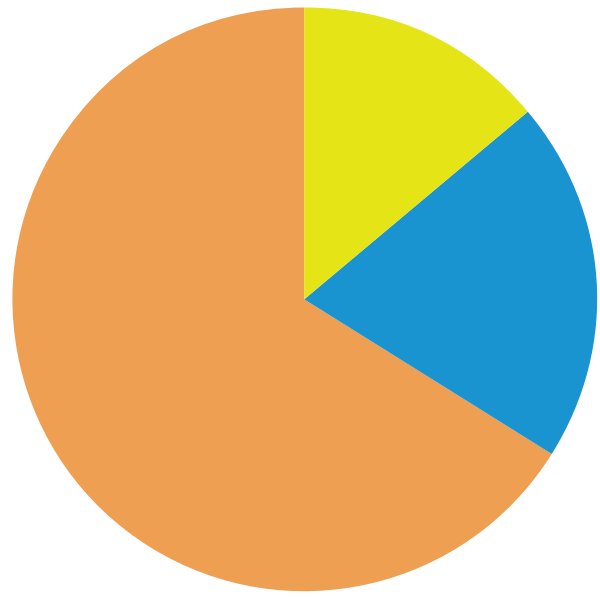
**0%** Earned & Indirect | \$135.52

**0%** Membership | \$1,200.00

**0%** Interest | \$233.37

**100%** Total Sources of Funds | \$503,793.11

## EXPENSES BY PROGRAMS



**66%** Educational Services | \$353,337.34

**20%** Education | \$107,818.95

**14%** Community | \$77,289.38

**0%** Advocacy | \$484.49

**100.00%** Total Expenses | \$538,930.16

## MEMBERS AS OF DECEMBER 31, 2020

Members | 695  
Arts Action Network | 3152  
Creative Network | 123

## SOCIAL MEDIA

Facebook followers | 1078  
Instagram followers | 1309  
Twitter followers | 1926

# **HAWAI'I ARTS ALLIANCE**

## **GOVERNING BOARD**

### **FISCAL YEAR**

**2020 - 2021**

#### **EXECUTIVE BOARD**

**Beth-Ann Kozlovich, Chair**

Senior Development Officer | Sutter Health Pacific Kahi Mohala

**Chair-Elect (Vacant)**

**Immediate Past Chair (Vacant)**

**Gail Mukaihata Hannemann, Secretary**

Former Chief Executive Officer | Girl Scout Council of Hawai'i

**Maile Meyer, Treasurer**

Executive Director | Ho'omaika'i, Pu'uuhonua Society

#### **BOARD MEMBERS**

**Katie Kaanapu**

DEPTH Marketing + PR

**Nola A. Nahulu**

Artistic Director | Hawai'i Youth Opera Chorus

**Aaron J. Salā**

Faculty | UH West O'ahu

**Ben Treviño**

President & CEO | Hawaii Institute for Public Affairs

**Bernard Uy**

Co-founder & Executive Creative Director | Wall-to-Wall Studios

**Suzanne Young**

Chief Executive Officer | Honolulu Board of Realtors

#### **ARTS FIRST PARTNERS**

**Ex-officio, Peter Arnade**

Dean | College of Arts and Humanities, University of Hawai'i

**Ex-officio, Philip J. Bossert**

Executive Director | Hawai'i Assoc. of Independent Schools

**Ex-officio, Jonathan Johnson**

Arts Education Director | SFCA

**Ex-officio, Christina Kishimoto**

Superintendent | Hawai'i Department of Education

**Ex-officio, Nathan Murata**

Dean | College of Education, University of Hawai'i

**Ex-officio, Teri Skillman**

Chief Executive Officer | Hawai'i Arts Alliance

#### **STAFF**

**Teri Skillman, Executive Director**

**Lei Ahsing, Education Director**

**Marcia Pascua, Associate Director of Education**

**Trisha Freitas, Office Manager**

# **THE HAWAI‘I** **ARTS ALLIANCE**

**We've moved to a new office in the Downtown Arts Center.  
Located on the corner of N. Hotel Street and Nu'uuanu Avenue,  
above Satellite City Hall, on the 2nd floor!**

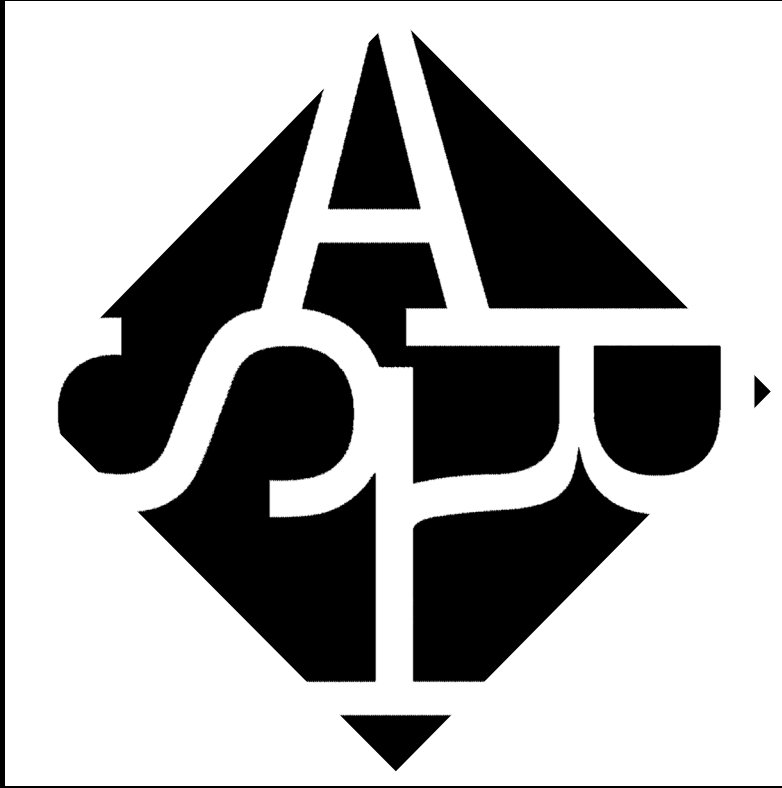


## **MAILING ADDRESS**

**Hawaii Arts Alliance**  
P.O. Box 3948  
Honolulu, HI 96812-3948

## **LOCATION ADDRESS**

**Hawaii Arts Alliance**  
2nd Floor, Downtown Arts Center  
1041 Nu'uuanu Ave, Honolulu, HI 96817



**HAWAII ARTS ALLIANCE**

**P.O. BOX 3948**

**HONOLULU, HI 96812-3948**