

HAWAI'I ARTS ALLIANCE  
ANNUAL REPORT FY 2021



**“Studying the arts fosters  
creativity, innovation,  
empathy, and resilience.”**

(Sam Cairns, [creative-generation.org](http://creative-generation.org))

# NAVIGATING THROUGH THE PANDEMIC

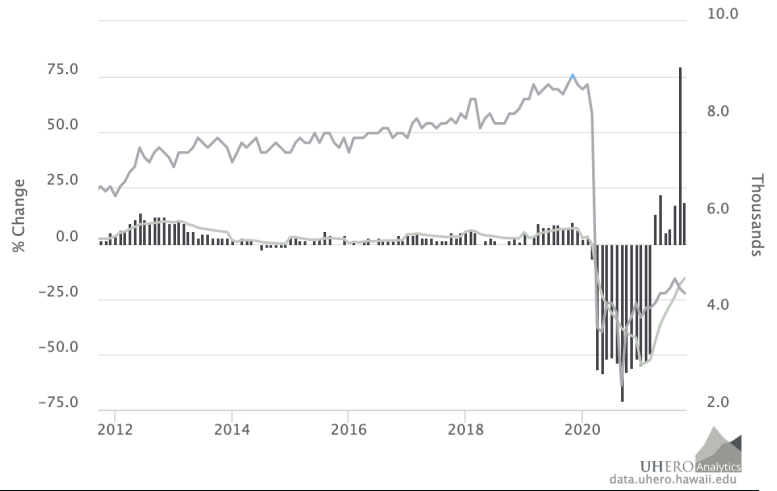
In reading through annual letters requesting support for colleges, museums, international organizations, and local arts organizations, one sentiment is clearly articulated: the time is critical and nonprofits are in dire need of support.

An estimated 25% of businesses in Hawai'i have shut down due to the pandemic economic crisis. The Arts District with 10 arts nonprofits has been adversely impacted by COVID. As the UHERO data for the Honolulu arts scene indicates, employment still remains well below the recovery curve. The creative economy dropped -70.6% to Level 2.5 in 2020 to has only recovered to Level 4.5 in October 2021.

Hawaii Arts Alliance has pivoted several times in the Fiscal Year 2021 by downsizing and moving into a new space at the Downtown Art Center; by realigning our vision with community needs based on our diversity, equity, and inclusion statement; and by collaborating in the community.

The mission of the Hawai'i Arts Alliance is to advocate for, engage, and transform communities by supporting and cultivating the Arts. We have pivoted to realign with our mission by taking these actions:

- BE THE ARTS ALLIANCE - We advocate for all the Arts & Culture genres by building an Alliance of Arts organizations to raise awareness of the importance of the arts in daily lives, education, and the State's economy. HAA is a member of the Creative Resurgence Task Force established by the State Legislature in 2021 to advocate for the creative economy statewide.
- Develop sustainable and diverse arts programs that provide access to in-school, out-of-school, and community arts classes through Hawai'i Wolf Trap residencies and the ARTS@theY Lab.
- As a founding member of Arts First Partners, we advocate for the Hawai'i Board of Education to adopt the National Core Arts Standards, include the arts as a core subject, and employ full-time, credentialed arts educators on every pre-K-12 campus.
- As an ARTS collaborator, we are working to build out services for artists who are permanent residents of Hawai'i.



**ARTS, ENTERTAINMENT & RECREATION JOBS**  
CITY & COUNTY OF HONOLULU - MONTHLY

Artists and their artistic practices are at the center of Hawai'i Arts Alliance's efforts to support the ARTS statewide. Artists are members of our communities, many working two or more jobs. They provide programming in-person and online for our social-emotional well-being. They are essential workers and second responders. Artists provide the art education and community programs that the Hawai'i Arts Alliance endeavors to support. The Creative Artist Network is our effort to build support for artists by providing services beneficial to them. We accomplish our advocacy work through education and collaboration, not lobbying.

This annual report highlights the work we have accomplished in each area of focus. The ARTS are essential to a well-balanced society, to our daily lives, and to the economic recovery of the Hawai'i economy. It is our hope that you will support our efforts in the coming year with a gift of any size.

With aloha and heartfelt mahalo,

**Teri Skillman**  
*Executive Director*

# ARTS ADVOCACY

ALFRED PREIS IN HAWAII:

VIENNA ÉMIGRÉ, ARCHITECT AND ADVOCATE

BY: AXEL SCHMITZBERGER, R.A.

PHOTO CREDIT: FRANCIS HAAR,  
COURTESY TOM HAAR

An exhibition on the work and life of Alfred Preis will debut in January 2022 and showcase for the first time in the 21st century, a comprehensive cross-section of the architecture of the Austrian immigrant architect and planner, Alfred Preis.

The life story and oeuvre of the US-Austrian architect Alfred Preis (1911 -1993) is a fascinating one. Born, raised, and educated as an architect in

Vienna, Preis had to flee Nazi-occupied Austria in 1939 and emigrated to the paradisaical Honolulu. Briefly imprisoned as an “enemy alien” after the United States entered World War II, he emerged as one of Hawaii’s leading architects in the 1950s and 60s. His celebrated career spanned over twenty-three years and comprised almost 180 built projects ranging from residences, schools, and parks to the famous USS Arizona Memorial at Pearl Harbor. Throughout his active years, he not only pioneered unprecedented advocacy for the environment and arts but also distinctively merged Viennese modernism with Hawaii’s cultures and climate, forging intriguing novel idioms for modern architecture and design in the tropics. He was, likely due to his own profound experiences as a refugee, one of the few vocal advocates raising the call to preserve and celebrate the native Hawaiian culture. He supported labor unions and proposed – often through his architectural work – to merge rather dominate cultural peculiarities. State Foundation on Culture and the Arts (1963), and shaped a new form of regional modernism and awareness. In 1980, Preis helped found the Hawaii Alliance for Arts Education, dba, Hawaii Arts Alliance as the nonprofit to advocate for the arts in Hawaii and to provide arts education.



**PHOTO CREDIT:** FRANCIS HAAR, COURTESY TOM HAAR

The upcoming exhibit is the first and only on the eve of Alfred Preis's 110th anniversary in 2021, is the first and only major effort to date to bring the US-Austrian architect back into the international spotlight by capturing, illustrating, and contextualizing the wide spectrum and influence of his prolific and innovative work.

Alfred Preis's work and life were first presented through an online exhibition at [<https://online-exhibitions.at/alfred-preis/?lang=en>] and is now followed by this traveling exhibition. An accompanying catalogue and a forthcoming book are in preparation.

### **The Exhibit**

The traveling exhibit that will circulate in Hawai'i consists of 7 retractable banners with that represent a cross-section of Preis's visionary work. It illuminates Preis's life in seven segments: Refugee, Apprentice, Innovator, Developer, Architect, Advocate, and, Art Czar.

Apart from known architecture projects, such as the USS Arizona Memorial, the Honolulu Zoo entrance, and the Hawaiian hale-inspired revolutionary First United Methodist Church, the exhibit showcases a variety of housing projects, commercial projects, and residences, identifying the broad range of work that made Preis an architect for the people. As an architect, Preis showed more interest in the society, culture, and environment than the architectural prestige, resulting in a large body of work that is in large part forgotten, destroyed, or endangered; only a few Alfred Preis buildings remain intact.

Viewing the work contextually, the exhibit curators position Preis's design strategies within the contemporary architectural dialogue. The exhibit examines the personal intersection of the

**"Hawai'i is itself a creative place. It is not just a place where creatives live, but rather the 'āina itself is engaged constantly in acts of creation. We can see that all around us. We are inspired by it, and we thrive here because of it."**

(Akiemi Glenn, Pōpolo Project)

small group of elite thinkers, represented in the collaborative work of Vladimir Ossipoff, Alfred Preis, Philip Fisk, Allen Johnson, and Thomas Perkins, that yielded the early regional modernist milestone of Laupahoehoe Elementary and High School on Hawai'i Island.

The arc of Preis' career contextualizes his architectural influences from Vienna and Hawai'i, illuminates the relationship between architecture and the environment, and highlights events that ultimately led Preis away from practicing architecture towards spearheading a role in arts and culture as an arts advocate, activist, and political ambassador.

### **The Curators**

The exhibit is co-curated by Prof. Axel Schmitzberger, R.A., and Assistant Professor Laura McGuire, Ph.D.

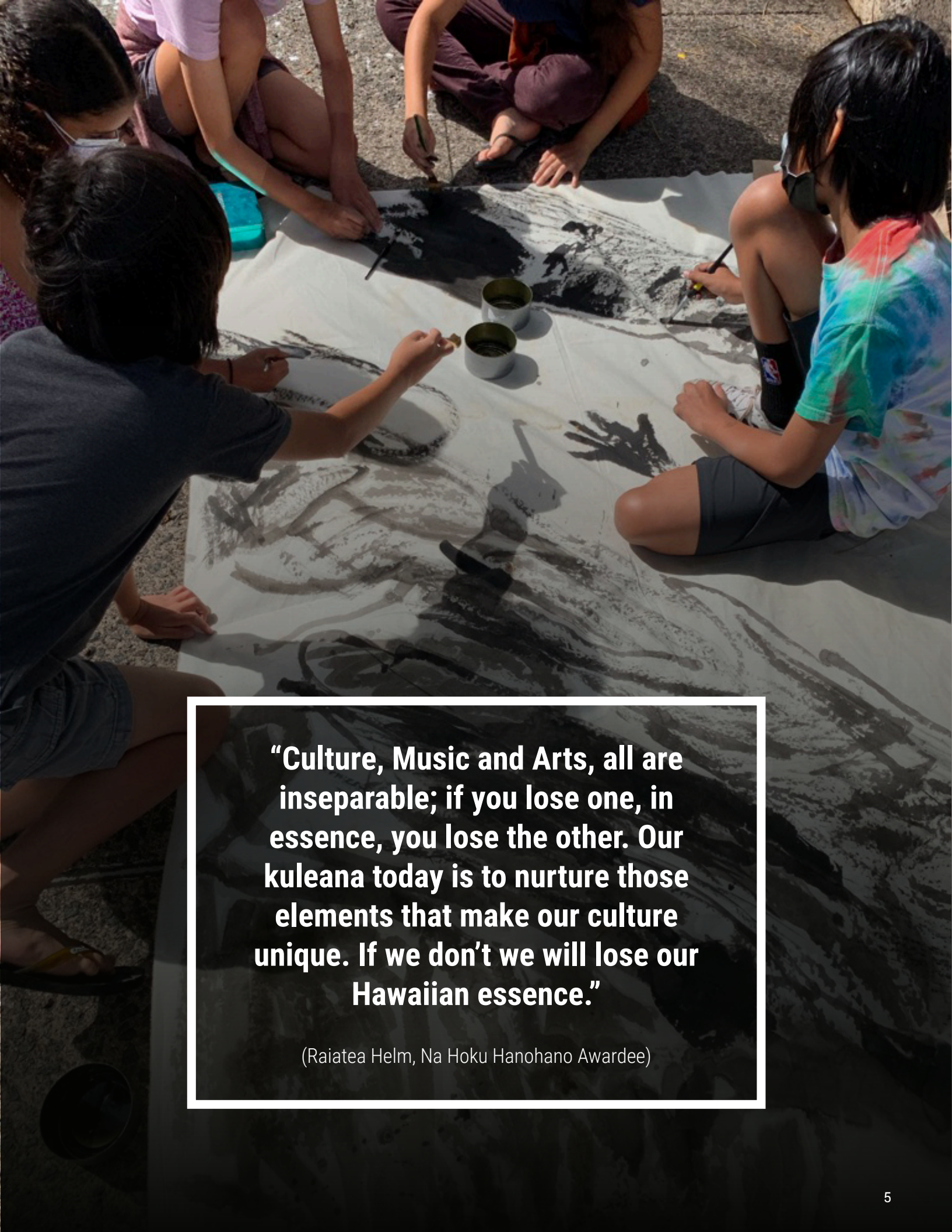
Axel Schmitzberger is an Austrian architect based in California and Hawai'i who recently co-authored the exhibition "Resident Alien – Austrian Architects in America" at the Austrian Cultural Forum in New York (ACFNY).

Laura McGuire is a Hawai'i-based historian at the University of Hawai'i at Manoa, School of Architecture, working on a comprehensive Alfred Preis biography. Her prior research includes fellow Austrian architects Friedrich Kiesler and Adolf Loos.

The online exhibit was initiated and supported by the Austrian Consulate General in Los Angeles. Additional support comes from the Austrian Federal Ministry of European and International Affairs, the Austrian Federal Ministry of Arts, Culture, Civil Service, and Sport. the Austrian Cultural Forum New York, Austrian Cultural Forum Washington D.C.

The online content was also made possible in part by the National Endowment for the Humanities: Grant FEL-262343-19, "A Biography of Alfred Preis (1911-1993): Immigrant, Architect, and Designer of the USS Arizona Memorial at Pearl Harbor."

The traveling exhibit that will circulate in Hawai'i is made possible by support from the Weissmann Family Foundation.



**“Culture, Music and Arts, all are inseparable; if you lose one, in essence, you lose the other. Our kuleana today is to nurture those elements that make our culture unique. If we don’t we will lose our Hawaiian essence.”**

**(Raiatea Helm, Na Hoku Hanohano Awardee)**

# COMMUNITY ARTS

The two new ARTS programs that Hawai'i Arts Alliance initiated in the FY2021, are a result of considering what is offered by arts & culture institutions in Honolulu and what programs are available to students in school and out of school, as well as for the community.

We found that DOE schools serving the student population in the Downtown/Chinatown area seriously lack arts education during school time. We surveyed access to the Arts through arts education in schools and community programs. In the eight elementary schools in or near the Honolulu Arts District;

- 2 schools have no arts teachers
- (art, drama, music) at all.
- 1 school has a part-time Hawaiiana teacher.
- 2 schools have a part-time music teacher.
- 1 school has a full-time teacher who "does arts stuff + more".
- 1 school has a full-time teacher who does music and art.
- Kalihi Kai Elementary School was the only school with full-time music and art teachers.

This translates into a lack of arts education for the District's Keiki and reflects the classification of Arts as a "special" class and not a subject area. Access to arts education is a civil right and our schools are failing to provide arts education on par with mathematics, reading, and sciences.

The Arts offerings in afterschool programs are also severely deficient. A+ programs do not include the arts. Many afterschool programs focus on sports and some include subject tutoring and homework assistance.

Arts classes for community members are virtually non-existent. The Honolulu Museum of the Arts closed Linekona School of Art and displaced the artists, who taught there for several decades, have found a home at the Downtown Art Center. In Kaka'ako, Fishcake is the only business offering some arts classes.

During the pandemic, people have turned to the arts for social-emotional support. Our goal is to establish an ARTS program that serves students out-of-school and the community, as well as helps to employ teaching artists. In FY 2021, the Arts Alliance collaborated with the Nu'uaniu YMCA to provide arts instruction for their Youth Department.

## Arts@theY

Hawai'i Arts Alliance offered music as an intersession activity at the Nu'uaniu YMCA during Spring Break. In the summer, the offerings were expanded to art, drama, and music for the Nā Alaka'i program for Middle Schoolers and for the Power Scholars students bridging from elementary to Central (Ke'elikolani) Middle School.



Visual artist Nanea Lum worked with students on visual mapping projects that culminated in creating a mural on the YMCA's wall facing Kamamalu Park. The mural depicted Nu'uaniu and the legend of Keaomelemele.

Emily Steward led drama improvisation classes for both groups. The students learned a variety of games that required improvisational skills and imagination.

Teri Skillman taught music using Orff instruments (metallophones, xylophones, hand drums) and Malaysian angklung. The students learned Malay gamelan compositions and composed their own song, "Ancient Cosmic" in the gamelan style.



## Traditional Arts Program

Arts Alliance began traditional arts classes at the Downtown Art Center offering visual art with Nanea Lum, a ceramic class for keiki with Rayna Galati, and a recycled instrument class with Ben Fairfield. Rana Galati purchased an electric kiln so that the Arts Alliance can develop the ceramics program for keiki to kupuna! Support for the program was kindly provided by the Cooke Family Foundation. In 2022, we will build more ARTS classes for keiki and the community by combining Traditional Arts Program with ARTS@theY at the Nu'uaniu YMCA!



## ARTS EDUCATION

This year Wolf Trap Institute for Early Learning Through the Arts approved Hawai'i Arts Alliance as their partner. The partnership creates Hawai'i Wolf Trap, Wolf Trap's newest addition to a growing network of 23 affiliates across the United States and Singapore that served nearly 58,000 children, parents, and educators in the 2019-2020 academic year through a combination of virtual and in-person classroom residencies, professional development workshops for teachers, and family workshops. Wolf Trap's affiliate program is operated under Wolf Trap Institute for Early Learning Through the Arts, a program of Wolf Trap Foundation for the Performing Arts based in Vienna, VA.

Hawai'i Wolf Trap programs are designed for children in preschool and kindergarten and their educators in the early childhood classroom. Programs introduce arts-based lessons that illustrate key curricular concepts such as literacy, incorporating song, movement, imaginative play, and musical instruments, to equip teachers with skills to infuse active learning through the arts in their instruction with every classroom of children they teach.

The teaching artists come from a variety of disciplines, including music, drama, and dance. Hawai'i Wolf Trap has four teaching artists -- Ikaika Regidor, Melisa Orozco Vargas, Chizuko Endo, and Michael Cowell -- were trained by Wolf Trap Master Teaching Artist Christina Farrell and Bryna Shindell, Assistant Director, National and Affiliate Services.

Partnering with Wolf Trap allows us to adapt and customize the Wolf Trap model for our schools, establish a cohort of Wolf Trap Teaching Artists to serve our communities, and join a network of arts education organizations sharing Wolf Trap resources and strategies. A classroom residency is a partnership between a Teaching Artist and a classroom educator that provides professional development with children as active participants. Residencies focus on performing arts-integrated strategies that teachers can use to foster young children's learning and development and support early childhood curriculum standards and outcomes.

### The Classroom Residency includes:

- Orientation/pre-residency planning meeting (1 hour)
- Eleven 30-minute classroom sessions with 15-minute debrief following each class
- At least two classroom sessions led by the classroom teacher with the teaching artist present and supporting. (8.25 hours)
- Three planning meetings (3 hours)
- Online access to resource materials from Wolf Trap Education Institute
- Contact time in the classroom: 12.25 hours
- Residency Duration: 6-8 weeks

**“Education is a medium of transference of culture and the arts. They go hand in hand. There’s no doubt in my mind that keiki who have been influenced by culture and the arts, thrive and survive in their regular studies because they want to continue to grow and learn in this way.”**

(Snowbird Bento, Kumu Hula & Educator)

# ARTS COLLABORATIONS

In Fiscal Year 2020, Hawai'i Arts Alliance collaborated with Hawai'i Contemporary and the East West Center Arts Program to offer workshops for the Creative Artists Network. The first series of workshops were hosted by the Hawai'i Contemporary, October 14 – November 18, 2020, on Wednesdays, 10 am–11:30 am (HST), as Zoom Webinar Workshops.

In collaboration with the Hawai'i Contemporary for Series 1, we launched a Professional Development Program for Artists. The workshops were designed by Sara Raza (Associate Director, Hawai'i Contemporary) for emerging and mid-career artists and cultural practitioners in Hawai'i. The series of live-streamed online workshops were led by established professionals in the global arts community, which provided the opportunity for participants to interact with arts industry experts.

Enrollment was free and sponsored by the Taiji and Naoko Terasaki Family Foundation. The workshops were open to Hawai'i residents only and attendance in all the workshops and the small-group session was expected.

## SERIES 1

**Workshop 1 ~ Professional Networking and Protocol / Understanding how to work with museums and curators.**

Presenters: Sara Raza (Hawai'i Contemporary)

**Workshop 2 ~ Fundraising and Development / Understanding fundraising strategies and mastering "the ask."**

Presenters: Sarah Schiavetti (independent development specialist)

**Workshop 3 ~ Art and Law / Protecting your art and ideas.**

Presenters: Yayoi Shionoiri (Estate of Chris Burden)

**Workshop 4 ~ Studio Management / Acquiring proficiency in industry best practices.** Presenters: Yvette Lee (Faou Foundation)

**Workshop 5 ~ Digital Futures / Understanding the digital landscape and the importance of social media.**

Presenters: JiaJia Fei (former digital director, The Jewish Museum and The Guggenheim Museum)

**Series 1 ~ Small-Group Session / In-depth, interactive mentoring for further professional development with one of five mentors: Sara Raza, Sarah Schiavetti, Yayoi Shionoiri, Yvette Lee, or JiaJia Fei.**

The Series 2 workshops held in Spring of 2021, focused on business skills for creatives. The series was a collaboration with Hawai'i Contemporary and the East West Center Arts Program, hosted by the East West Center Arts Program. The workshops were open to Hawai'i residents only.

## SERIES 2

**Workshop 1 ~ Basic Budgeting & Financial Skills Workshop**

Presenters: Paul Arakawa and Vivien Salvador (Aloha Pacific Federal Credit Union)

**Workshop 2 ~ Branding Your Arts Business**

Presenters: Bella Hughes (Hawai'i Contemporary) & Ara Laylo (Nella Media Group)

**Workshop 3 ~ Marketing & Social Media**

Presenters: Tracy Chan (DAC) & Katie Kaanapu (Depth Marketing)

**Workshop 4 ~ Building a Portfolio, Resume & Elevator Pitch**

Presenters: Meleanna Meyer (Independent Artist), Rosina Potter (Four Season Curator), & Aaron Salā (Recording Artist)

More workshops are being planned for artists to assist with the Honolulu Triennial in 2022 and another round of Business skills workshops will follow in the Fall of 2022.

## HAWAI'I ARTS ALLIANCE COLLABORATED WITH THE FOLLOWING ARTS & CULTURE ORGANIZATIONS IN FY2021:

Arts First Partners  
Creative Resurgence Hui  
Downtown Art Center  
Hawai'i Contemporary  
H.O.P.E  
Keep It Flowing  
MOCA  
Nu'uuanu YMCA  
Wolf Trap





**“We, as the artists, the musicians, the painters, the poets, the dancers, are indeed the second responders.**

**We step in to bring healing, to uplift, and offer reflection to the depressed and anxious communities.”**

(Dave Moss, ED, Hawai'i Symphony Orchestra)

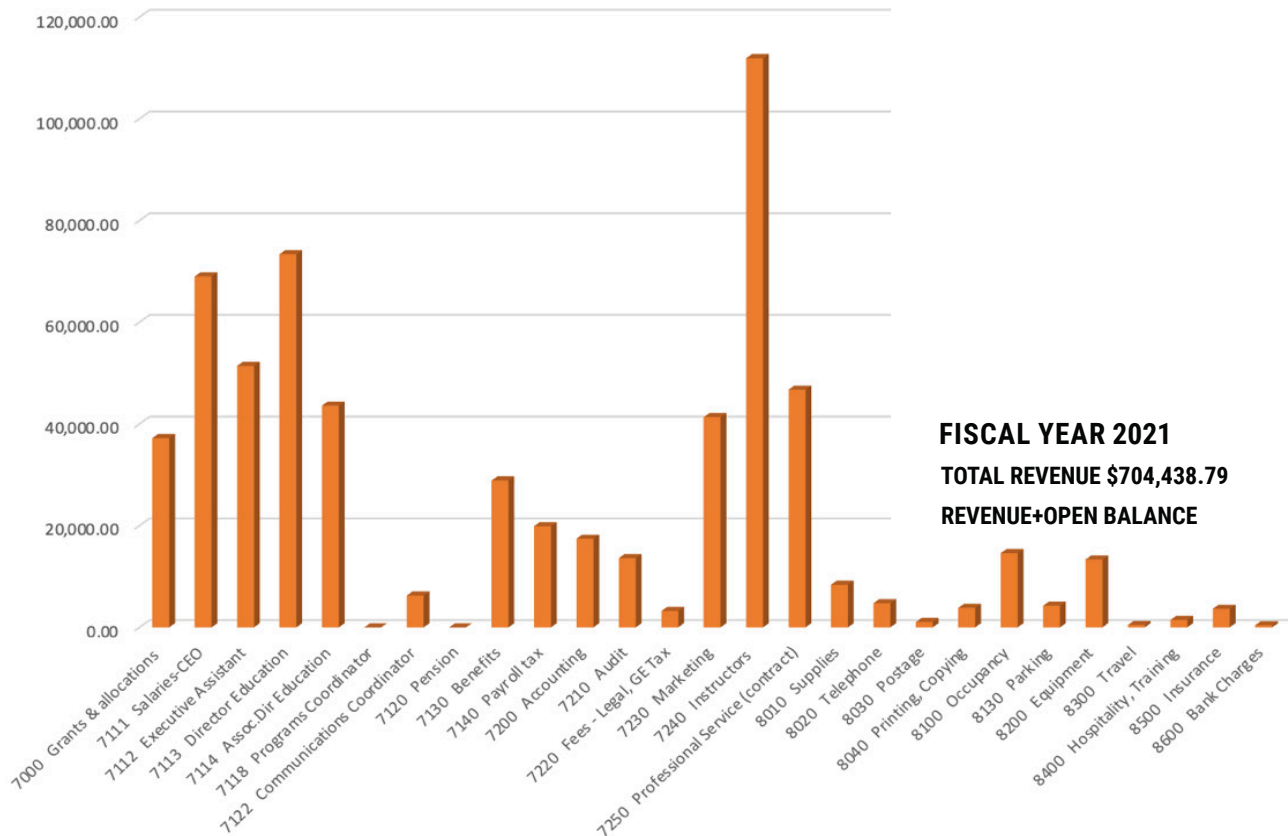
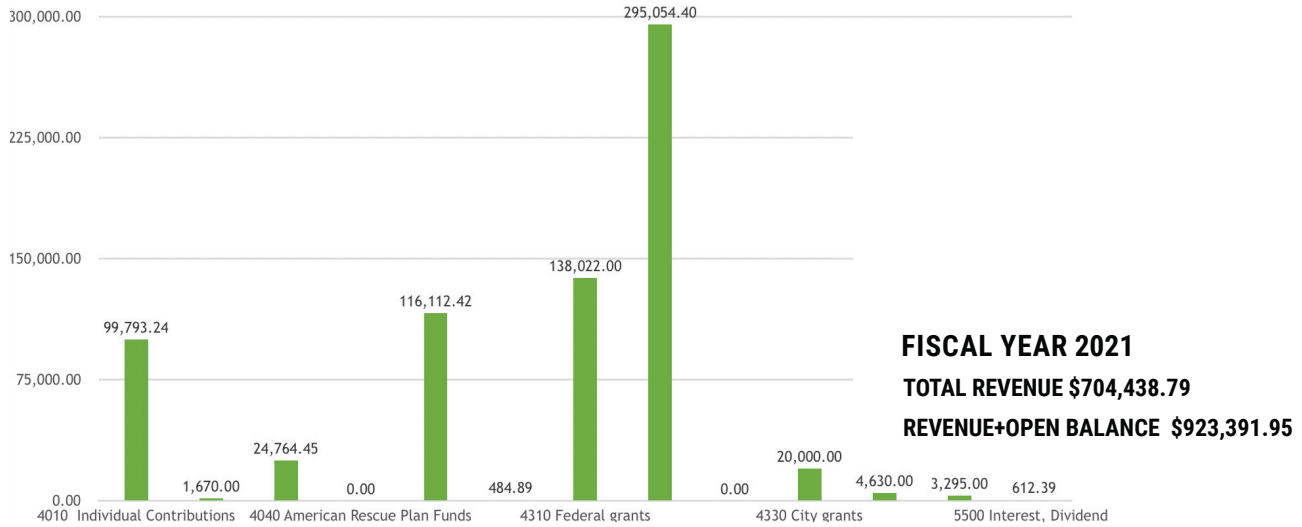
# FINANCIAL REPORT

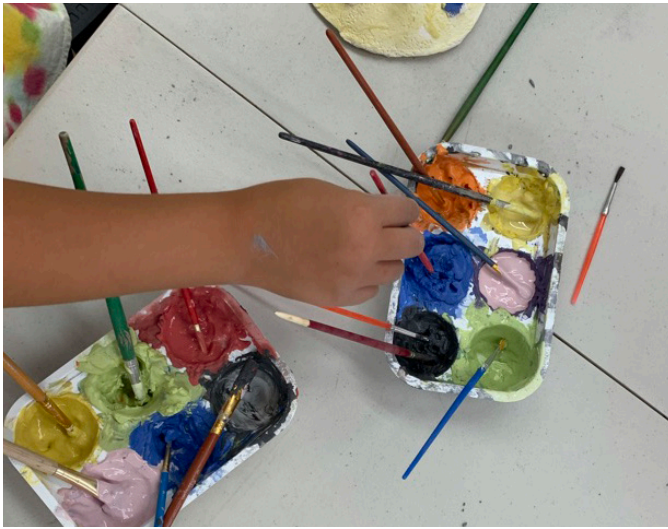
This past year has been an arduous year for the Arts Alliance in more ways than we could have imagined and the financial report reflects the challenges.

At the close of FY 2021, Hawai'i Arts Alliance lost the State Foundation on Culture and the Arts education contract. This was not anticipated as we had pivoted to provide digital content during COVID and we had 3 years left in a 4-year contract. The loss of \$287,000 for

FY 2022 meant another pivot to extend the nonprofit's runway. This was our final pivot in a series: 1) downsizing office space, 2) releasing contract workers, 3) moving into a smaller office space, and 4) releasing salaried staff.

The Arts Alliance continues to work on strengthening our financial model to include programs with revenue streams, grants, collaborative service contracts, and donations.





## SUPPORTING HAWAI'I ARTS ALLIANCE'S WORK

Arts nonprofits, like the Hawai'i Arts Alliance, are businesses that serve the community and advocate for Decent Work for workers in the Creative sector.

**“Now think about what your life, our communities would be like without the arts and creative sector. No theater, concerts, live performances, virtual programs, films, dance, etc. And now imagine what your life, our community’s well-being would look, sound, feel, taste, be like with a thriving creative sector.”**

(Laurien Nuss, Creative Resurgence)

Most of the grants that we receive are restricted to program implementation with a small percentage of the award for operational support. In truth, nonprofits need operational funds to cover salaries and benefits, rent, utilities, organizational insurance, equipment rental, technology, and other non-program-specific expenses. None of the programs would be possible without unrestricted operating funds. We kept staff employed through the pandemic but the sudden cancellation of a State art education contract forced us to reduce staff to a minimum. As we rebuild over the next year, our top priority is to advocate for the ARTS through educating the public, building programs, and collaborating to ensure that the Hawai'i Arts Alliance is dynamic.

We realize that succor comes in many different ways so we are sharing various options. We need your support to continue. No donation is too small. Your kindness is deeply appreciated.

## WAYS TO SUPPORT THE HAWAI'I ARTS ALLIANCE

### Membership in the Arts Alliance

The benefits of membership include 5% discount on Arts classes, quarterly newsletter, action e-blasts, special events announcements, and an ARTS mask to wear proudly as an arts supporter!

- Artist/Educator & Kupuna \$25
- Individuals \$30
- Family (3+) \$50
- Businesses \$50

### Modes for Donation

- An old fashioned paper check
- Monthly recurring PayPal donation
- Facebook donation
- Join Aloha United Way #72450 (See your employer)
- Sign up for Amazon Smile  
(<http://smile.amazon.com/ch/99-0211535>)
- Planned donation through your Bank
- Join Aloha Pacific Federal Credit Union
- Payroll donation through your employer
- ARTS License Plate through the Dept. of Motor Vehicles

**Please contact us if you have any questions or need assistance.**

**Phone: (808) 533-2787 | Email: [arts@hawaiiartsalliance.org](mailto:arts@hawaiiartsalliance.org)**



## DONORS

Aerin Vanhala  
Amazon Smile  
Amy Salling  
Benjamin Trevino  
Betty Lou Kam  
Bonnie Kim  
Carlynn Wolfe  
Carol Aki  
Danielle Preston  
Debra Mcgee  
Facebook  
Fatiha Kheddaoui  
Foodland Give Aloha  
G. Blair Mccune  
Gail Mukaihata  
Holly Chung  
Jaydon Isobe  
Jessica Nelson  
Jodi Endicott  
Joshua Masagatani  
Juno Apalla  
Katie Pena  
Keala Fung  
Kristen Agarpao  
Kristy Sakai  
Leona Lanzilotti  
Letrice Mitchell  
Maile Meyer  
Maniology  
Margaret Tobita  
Mark Yamane  
Melinda Caroll  
Niche Models & Talent  
Noe Tanigawa  
Norene Ajimine  
Paypal Giving Fund  
Razi Shaban  
Rebecca Narrowe  
Shenile Cabebe  
Squire Coldwell  
Susan Browne  
Suzanne Young  
Traci Kawahara  
Trent Skillman  
Verne Kiaha  
Zoe Liu

## GRANTS

Atherton Family Foundation  
Cooke Foundation  
Hawai'i Community Foundation  
Johnson Ohana Family Foundation  
McInerny Foundation  
National Endowment for the Arts  
State Foundation on Culture & the Arts  
Swayne Family Fund  
Sydney Stern Memorial Trust  
Weissman Family Foundation



# HAWAI'I ARTS ALLIANCE BOARD

## **Executive Board**

Beth-Ann Kozlovich, Chair

*Senior Development Officer, Sutter Health Pacific Kahi Mohala*

Gail Mukaihata Hannemann, Secretary

*Former Chief Executive Officer, Girl Scout Council of Hawai'i*

Maile Meyer, Treasurer

*Executive Director, Ho'omaika'i, Pu'uuhonua Society*

## **Board Members**

Katie Kaanapu

*CEO, Depth Marketing*

Nola A. Nahulu

*Artistic Director, Hawai'i Youth Opera Chorus*

Aaron J. Salā

*West Oahu University and Royal Hawaiian Center*

Ben Treviño

*Brigade Program Director, Code for America*

Bernard Uy


*Co-founder & Executive Creative Director, Wall-to-Wall Studios*

Suzanne Young

*Chief Executive Officer, Honolulu Board of Realtors*

## **Hawai'i Arts Alliance Staff**

Teri Skillman, *Chief Executive Officer*



**“In our individual and collective journeys to becoming, we must constantly remind ourselves... we must constantly reflect upon the fact that if we have the ability to breathe, then we also have the capacity to create and in that creativity is an artistic sense of self that is at the very core of humanity. We have to harness that creative resurgence.”**

(Aaron J. Salā, Nā Hōkū Hanohano Awardee)

**Physical location:**

Hawai'i Arts Alliance  
2nd Floor, Downtown Art Center  
1041 Nu'uuanu Ave.  
Honolulu, HI 96817

**Phone: 808.533.2787**

**Mailing Address:**

Hawai'i Arts Alliance  
P.O. Box 3948  
Honolulu, HI 96812-3948